

ASTON BAY

**Exploring for large, high-grade,
sediment-hosted copper and zinc deposits
in the Canadian Arctic**

TSX-V: BAY

ASTON  BAY

April 2018

Not an Offer to Purchase or Sell Securities. This website is for informational purposes and is not an offer to sell or a solicitation of an offer to buy any securities in Aston Bay Holdings Ltd. (the "Company"), and may not be relied upon in connection with the purchase or sale of any security.

Forward-Looking Statements and General Disclaimer:

This presentation is Copyright 2018 Aston Bay Holdings Ltd., which reserves all rights in and to this presentation.

Aston Bay Holdings Ltd. (the "Company") is a public company listed on the TSX Venture Exchange (TSX-V: BAY), with a principal office in Toronto, Ontario and a registered office in British Columbia, Canada.

The statements contained in this presentation which are historical in nature are accurate to the best of our knowledge. However, the Company makes no assurances and does not guarantee that the statements included herein are accurate.

Forward-Looking Statements (Safe Harbor Statement):

The information set forth in this website may contain "forward-looking statements" that are not historical fact and are subject to certain risks and uncertainties. Statements in this website which are not purely historical in nature, including statements regarding beliefs, plans, expectations or intentions regarding the future, are forward-looking. Statements that are not historical facts, including statements that are preceded by, followed by, or that include such words as "estimate," "anticipate," "believe," "plan", "intend", "expect", "may" or "should" or similar statements, are forward-looking statements. Forward-looking statements which may be contained within this website include, but are not limited to, statements regarding the economic prospects of the Company's projects, general economic conditions, the Company's future plans or future revenues, timing of development and potential expansion or improvements. Such forward-looking statements are subject to risks and uncertainties which could cause actual results to differ materially from estimated results. Such risks and uncertainties include, but are not limited to, the Company's ability to raise sufficient capital to fund development, changes in general economic conditions or financial markets, changes in prices for the Company's mineral products or increases in input costs, litigation, legislative, environmental and other judicial, regulatory, political and competitive developments in Canada and world-wide, technological and operational difficulties or inability to obtain permits encountered in connection with exploration and development activities, labor relations matters, and changing foreign exchange rates. There can be no assurance that the Company's efforts will succeed and ultimately achieve sustained commercial success. These forward-looking statements are made as of the date of this presentation. There can be no assurance that beliefs, plans, expectations or intentions of the Company will prove to be accurate. We seek safe harbour.

Cautionary Note to U.S. Investors:

The United States Securities and Exchange Commission (the "SEC") permits U.S. mining companies, in their filings with the SEC, to disclose only those mineral deposits that a company can economically and legally extract or produce. We may use certain terms on this presentation, such as "measured," "indicated," "inferred," and "resources," that the SEC guidelines strictly prohibit U.S. registered companies from including in their filings with the SEC. As of the date of this Presentation, the Company has made no filings with the SEC, and makes no representations that it has or will have a duty to make filings with the SEC.

Qualified Person:

The technical information contained within this website has been reviewed and approved by the Company's Consultant, Primary Geologist and Director, Michael Dufresne, M.Sc., P. Geo., a qualified person as defined by NI 43-101.

A Copper and Zinc Exploration Company

Market Cap ~\$22 M*

**Technical expertise &
focus; proven discovery
record**

No Debt

Available Cash ~\$6 M*

Institutional Shareholders

Commodity Discovery Fund

**JPMorgan Asset Management
(UK)**

Mackenzie Investment Group

Sprott Asset Management

Regional-scale Block

1,000,000 acres

Drill-proven

**Storm Copper
Seal Zinc**

*All prices in CND dollars, dated Apr 25, 2018



Thomas Ullrich – *Chief Executive Officer, Director*

Mr. Ullrich has over 20 years of experience in mineral exploration and geoscience. Before joining Aston Bay in 2016, Mr. Ullrich was Chief Geologist North America for Antofagasta Minerals plc, investigating the region's copper potential through extensive property evaluations and management of drill programs in Alaska and Canada. Prior to Antofagasta, he was Senior Geologist for Almaden Minerals, where he managed the drill program for the team's discovery of the Ixtaca Ag-Au deposit in Mexico. Mr. Ullrich also established the Ar-Ar geochronology lab at the University of British Columbia and studied the Candelaria Cu-Au mine, Chile, while at Queen's University. Mr. Ullrich also serves on the Technical Advisory Board for CopperBank Resources.



David Broughton – *Chief Geologist, Storm and Seal Projects*

Dr. Broughton is an acknowledged expert in sediment-hosted copper deposits with over 30 years' experience in mineral exploration. He was Geology Manager for Cyprus Amax's Kansanshi pre-feasibility project, now Africa's largest copper mine. From 2008 to 2016 he was Executive Vice President Exploration for Ivanplats, now Ivanhoe Mines. During his tenure, the world-class Kamo Cu (Central African Copperbelt) and Flatreef PGE-Ni-Cu-Au (Bushveld Complex) deposits were discovered. He was co-awarded PDAC's 2015 Thayer Lindsley Award for International Mineral Discovery (Kamo), and AME BC's 2016 Colin Spence Award for Excellence in Global Mineral Exploration (Flatreef discovery). Dr. Broughton is currently a Senior Advisor for Ivanhoe Mines. He received a BSc. (Hons) and an MSc. in Earth Sciences from the University of Waterloo and a Ph.D. in Geology from the Colorado School of Mines.



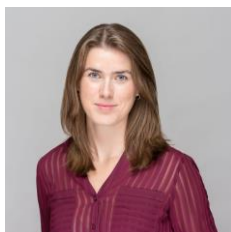
Michael Dufresne – *Consultant, Primary Geologist and QP, Director*

Mr. Dufresne is the President of Apex Geoscience, an ~60-person geological consultancy. Mr. Dufresne has extensive experience with a wide range of commodities and types of deposits as well as involvement in a number of scientific government studies. Mr. Dufresne is a Professional Geologist with the Association of Professional Engineers, Geologists and Geophysicists of Alberta (since 1989). He is also a member of the Canadian Institute of Mining and Metallurgy, Geological Association of Canada, and Association of Exploration Geochemists. Mr. Dufresne obtained his M.Sc. in Economic Geology from the University of Alberta, and a B.Sc. in Geology with a minor in Chemistry, from UNC-Wilmington.



Dwight Walker – *Chief Financial Officer*

Mr. Walker has over 30 years' experience in finance and administration, including the most recent 10 years within the mining sector. He has served as the Chief Financial Officer of several public companies. Mr. Walker is the former CFO of ECU Silver Mining Inc., an emerging Mexico-based silver producer that had 500 employees and two operating mills, and part of the team that sold the company through a plan of arrangement transaction at a value in excess of \$300 million. Mr. Walker is a CPA, CGA and holds a Bachelor of Mathematics degree from the University of Waterloo.



Sofia Harquail – *IR and Corporate Development*

Ms. Harquail has experience in both the private and public sectors of the mining industry. Over the last five years, she has worked as a consultant for the Prospectors and Developers Association of Canada and for exempt market dealer Red Cloud Klondike Strike Inc. Ms. Harquail holds an M.A. from the University of Uppsala in Sweden and received her CPIR designation from the CIRI/Ivey Investor Relations Program. She also sits on the board of the Young Mining Professionals Toronto and is CSC Certified.

Aston Bay Share Structure

SHARE STRUCTURE¹

Shares Outstanding: 117,508,861

◆ Warrants²: 17,029,488

◆ Options³: 6,010,000

Share Price: \$0.19

Market Cap: \$22 M

Cash: \$6 M

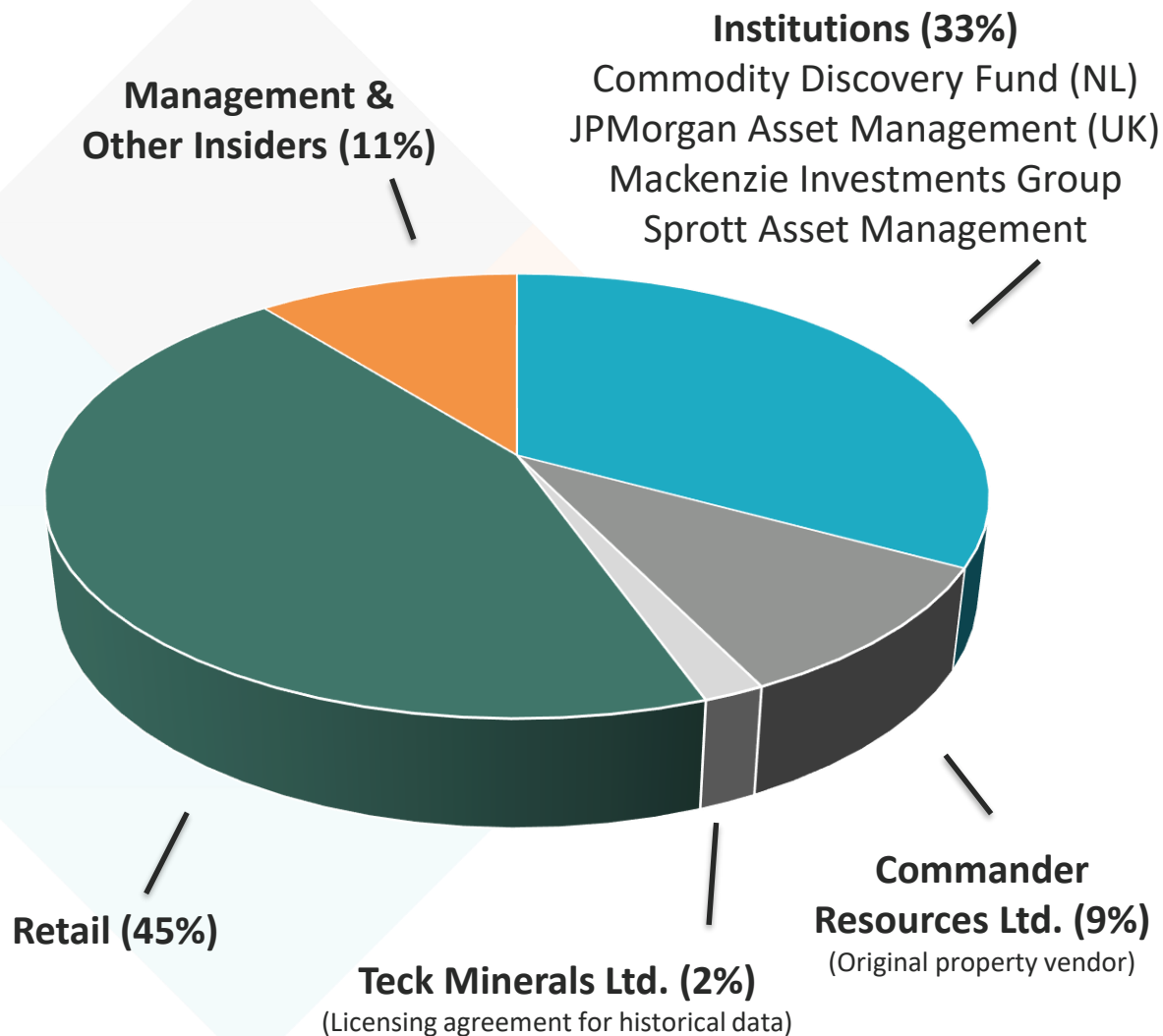
Debt: NIL

Insider Ownership: 11%

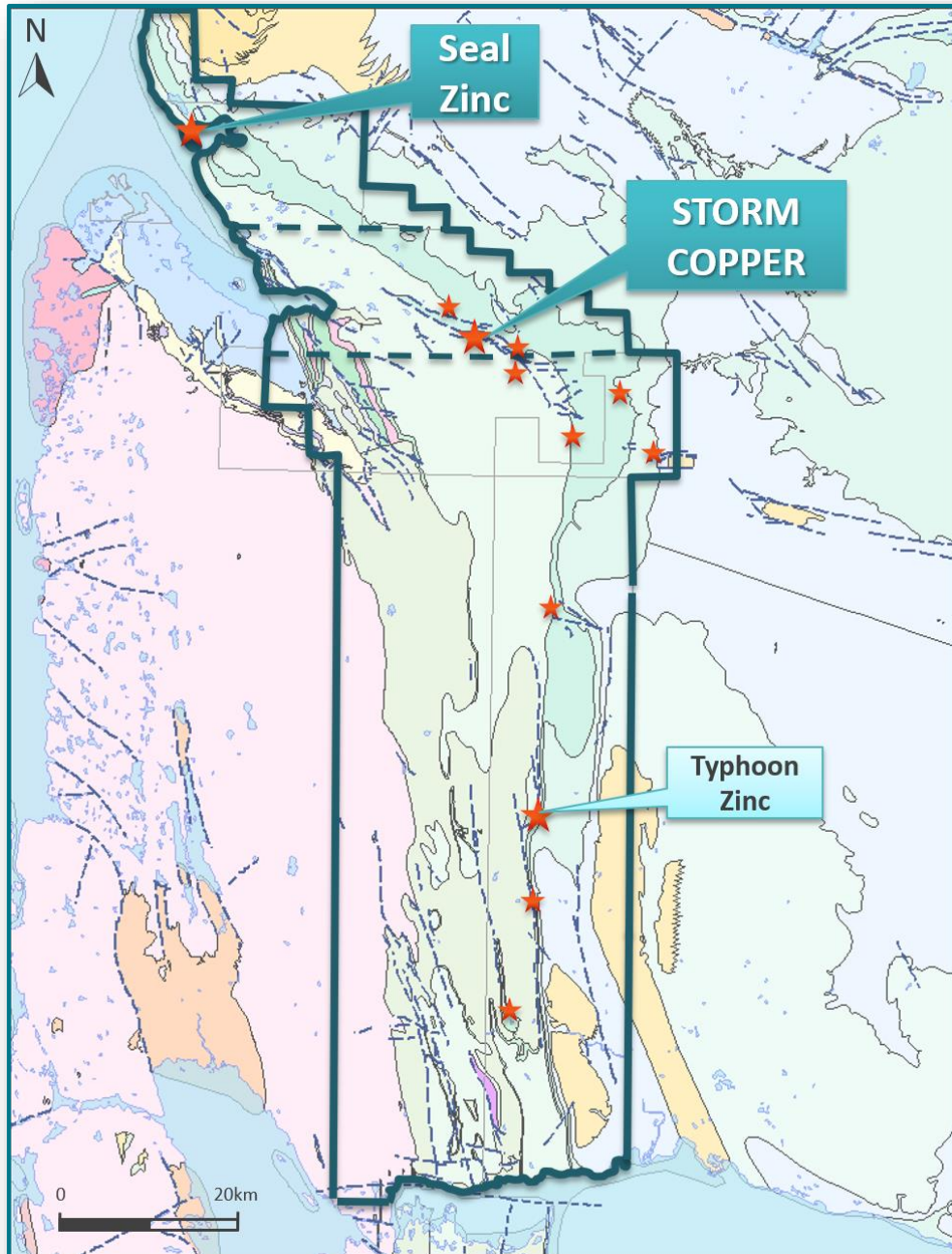
1. All prices in CND dollars, dated Apr 25, 2018.

2. Warrant Details: Warrants 5,852,452 (\$0.18 due Jan 2019).
Warrants 11,177,036 (\$0.20 due Mar 2020).

3. Options Details: Average exercise price: \$0.237. Average remaining life: 4.8 years.

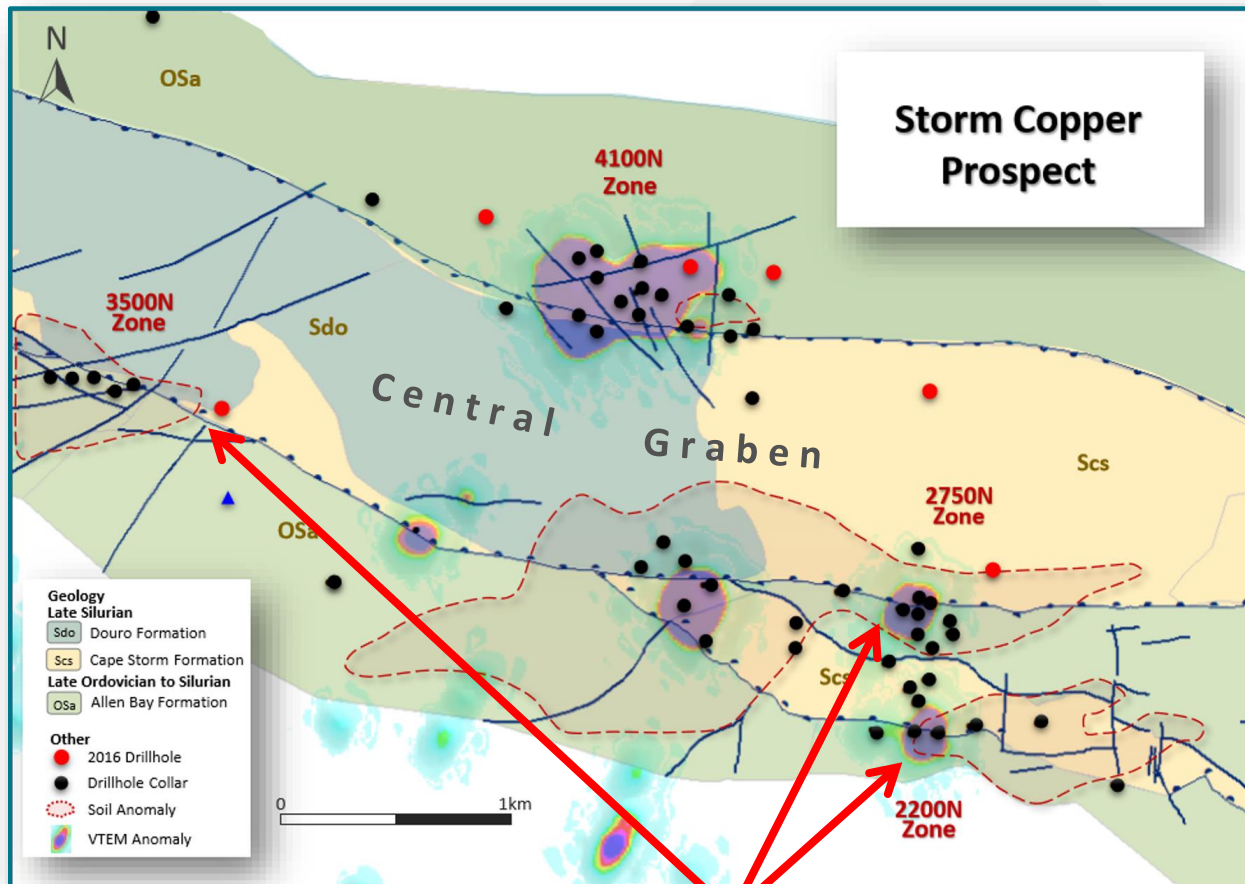






- ❖ 100% ownership (4,145 km²) hectare property.
- ❖ Along strike from past-producing Polaris zinc mine (21 Mt @ 14% Zn): **“Elephant Country”**.
- ❖ Multiple Cu and Zn showings along >140km strike length of correlative host rocks.

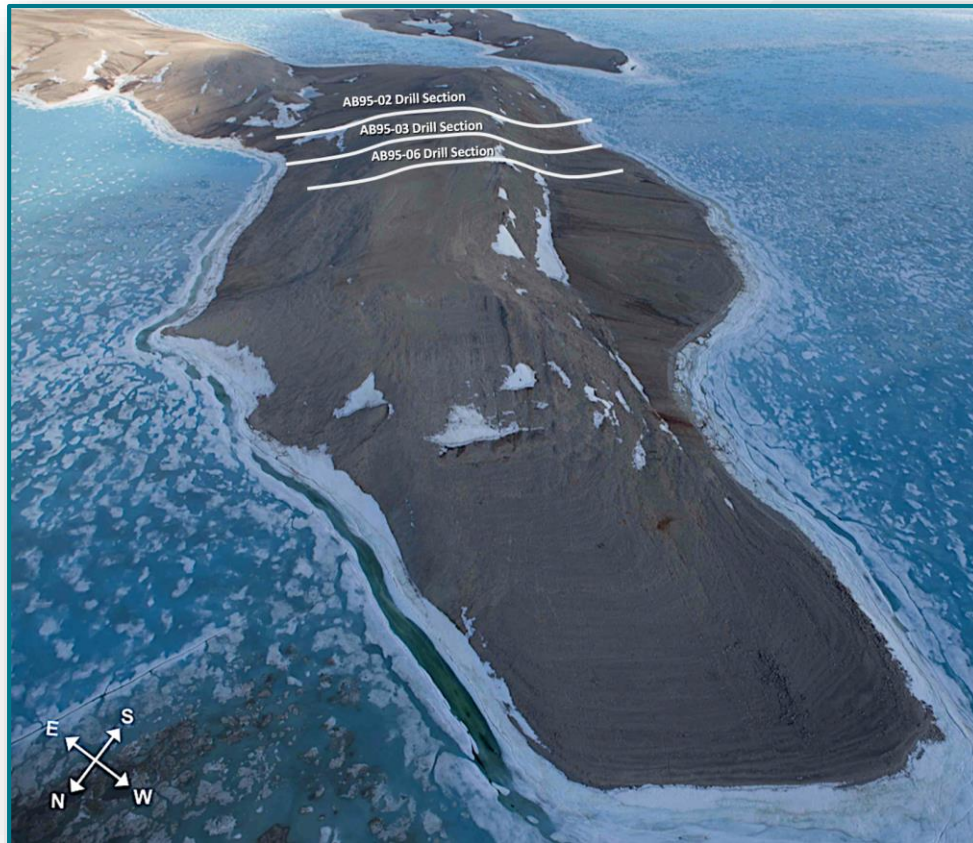
High grade, near-surface copper mineralization confirmed by over 9,000 metres of historical drilling.



**High-grade Cu
“leakage” along faults**

- ◆ Average hole depth <150 metres.
- ◆ Highlights include 56.3m @ 3.07% Cu; 110.0m @ 2.45% Cu; 31.7m @ 2.08% Cu.
- ◆ What lies below??





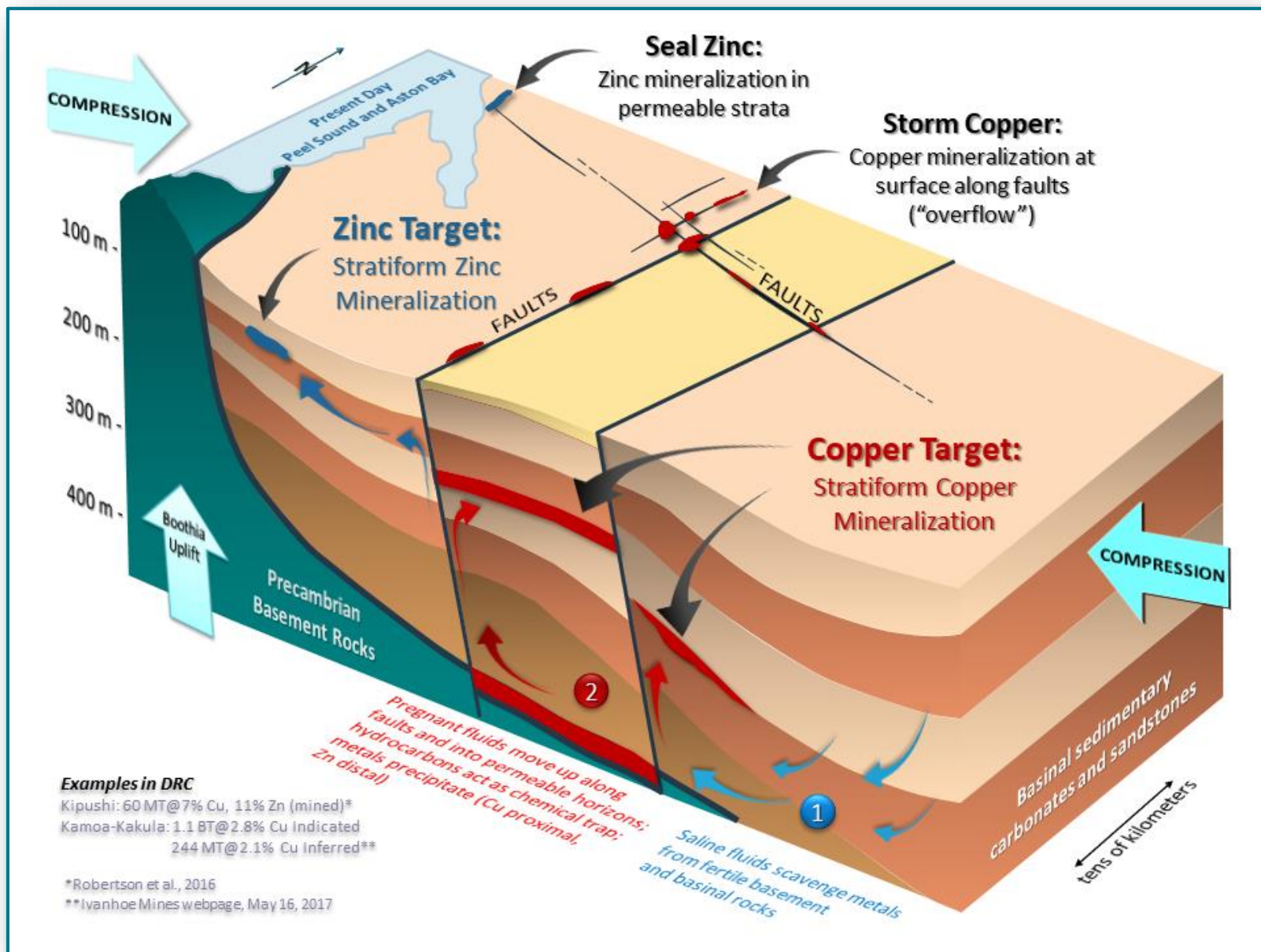
- ◆ Stratiform sphalerite + pyrite replacing sandstone matrix.
- ◆ Nearby Storm copper mineralization produced an age of $378.1 \pm 1.3 \text{ Ma}^*$, within the range of uncertainty for the age of zinc mineralization at the nearby past-producing (20.1 Mt @ 13.4% Zn) Polaris mine at $374 \pm 9 \text{ Ma}^{**}$

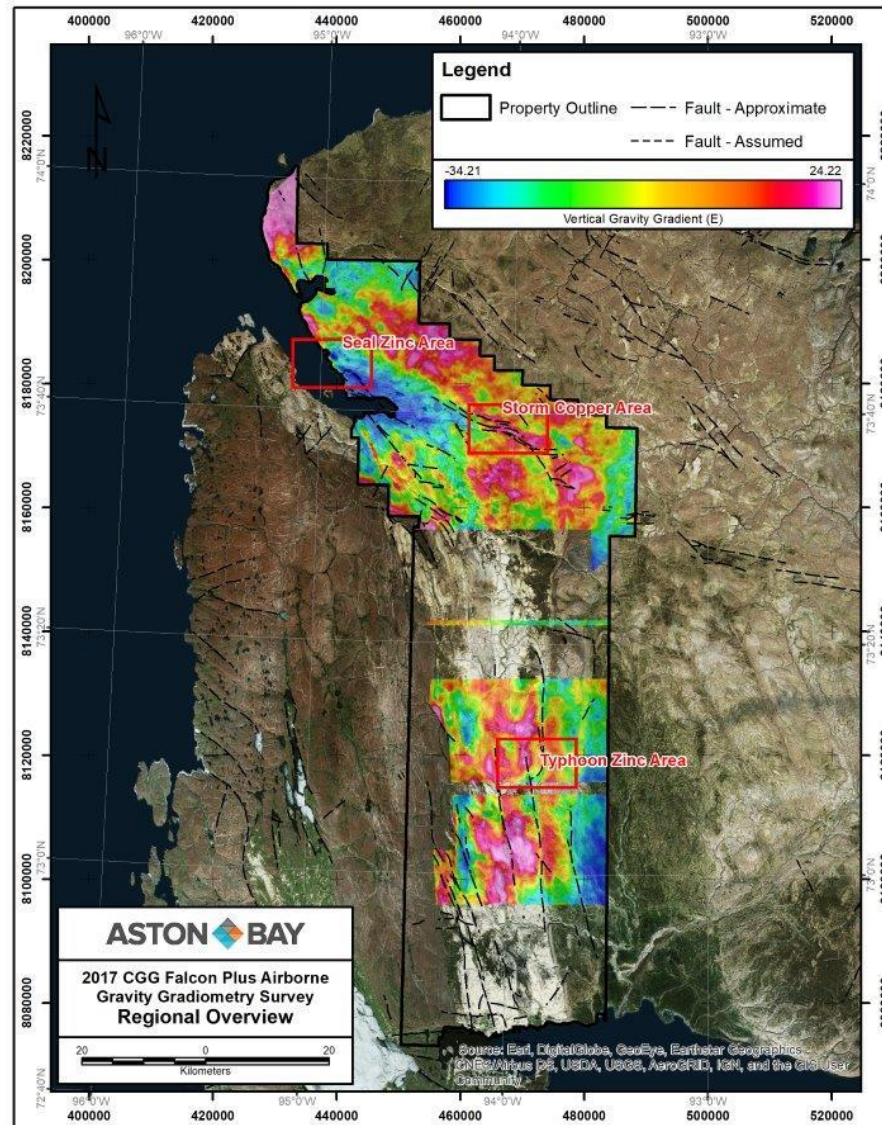
* (Stein, 2016)

** (Selby et al., 2005; Dewing et al., 2007)

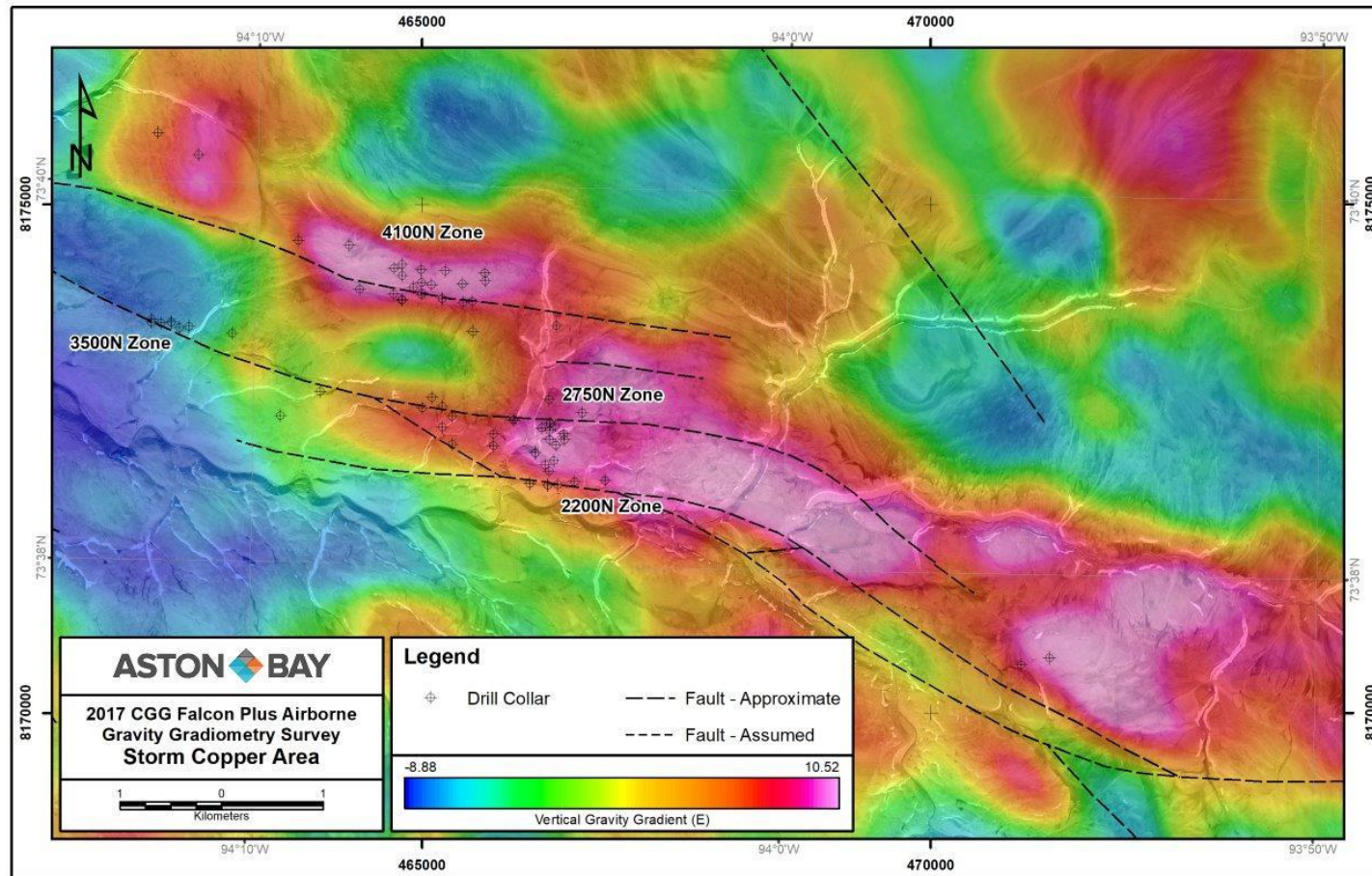
HIGHLIGHTS OF INFERRED MINERAL RESOURCE ESTIMATE @ 4.0% ZNEQ CUT-OFF (DECEMBER 2017)

Tonnage Mt	Zn %	Contained Zn kt	Ag g/t	Contained Ag koz	ZnEq%
1.006	10.24	103	46.5	1,505	11.44

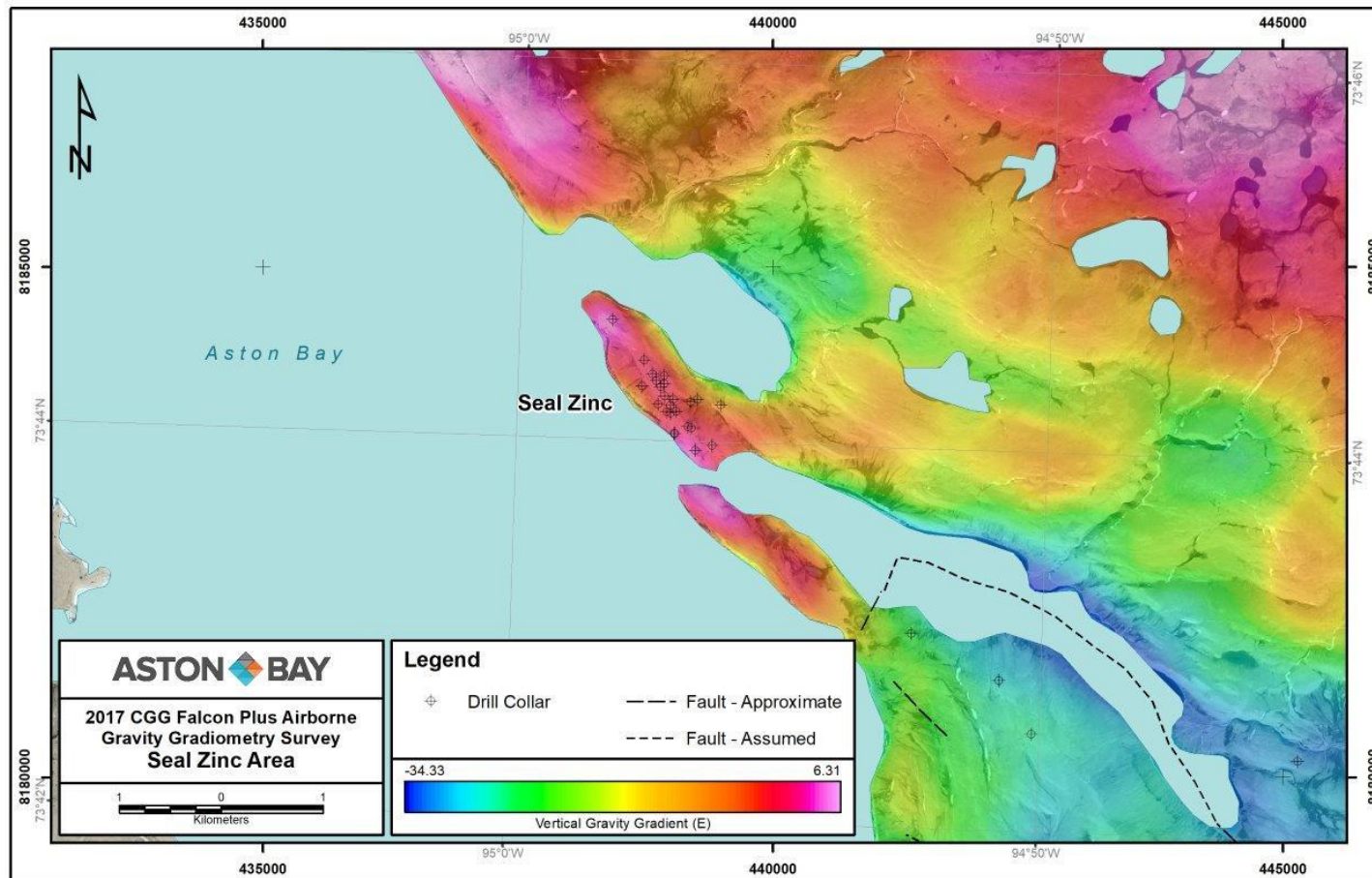




**In addition to being caused by more dense mineral deposits, gravity anomalies can also be caused by changes in overburden thickness or type, geological structures, variable densities in lithology, etc. Information gained from gravity on lithological and structural features can be quite valuable in addition to direct detection of mineral deposits.*



**In addition to being caused by more dense mineral deposits, gravity anomalies can also be caused by changes in overburden thickness or type, geological structures, variable densities in lithology, etc. Information gained from gravity on lithological and structural features can be quite valuable in addition to direct detection of mineral deposits.*

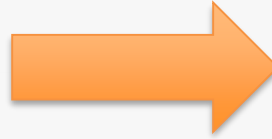


**In addition to being caused by more dense mineral deposits, gravity anomalies can also be caused by changes in overburden thickness or type, geological structures, variable densities in lithology, etc. Information gained from gravity on lithological and structural features can be quite valuable in addition to direct detection of mineral deposits.*

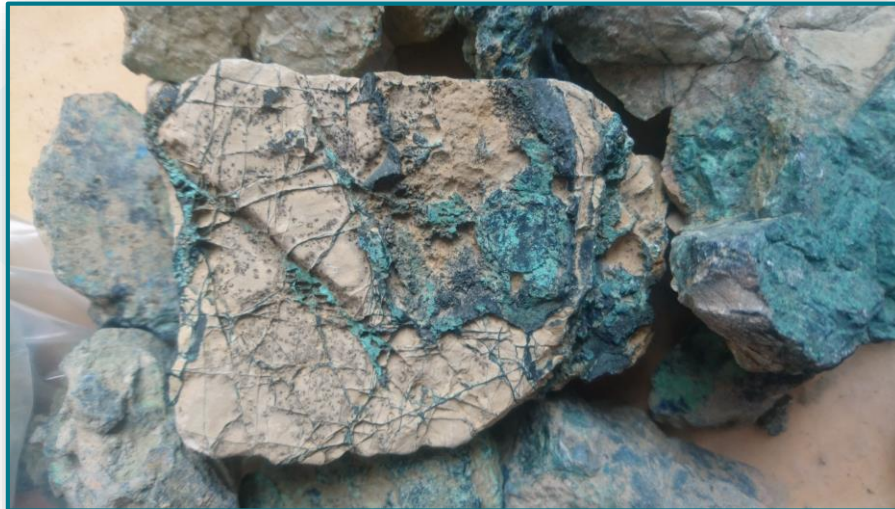
Q3 2017	Q4 2017	Q1/Q2 2018	Q2/3 2018
<ul style="list-style-type: none">❖ Geologic field work and targeting❖ Property wide gravity (AGG) survey	<ul style="list-style-type: none">❖ Results from property-wide airborne gravity survey❖ Seal Zinc 43-101 Initial Resource Estimate	<ul style="list-style-type: none">❖ Geological and geophysical interpretation❖ Drill targeting	<ul style="list-style-type: none">❖ Potential additional airborne geophysics (VTEM and/or gravity)❖ Proposed 4,000m drill program

*Drill-confirmed,
high-grade outcropping
copper and zinc*

EXPLORATION



*Potential for large,
concealed, stratiform
copper and zinc deposits*



FOR MORE INFORMATION

Thomas Ullrich, Chief Executive Officer, Director thomas.ullrich@astonbayholdings.com
Sofia Harquail, IR and Corporate Development sofia.harquail@astonbayholdings.com
80 Richmond St W Suite 303, Toronto, ON M5H 2A4 Canada
www.astonbayholdings.com