

ASTON BAY

**Exploring for
Copper, Zinc and Gold
in North America**

July 2019

TSX-V: BAY
OTCQB: ATBHF

Not an Offer to Purchase or Sell Securities. This website is for informational purposes and is not an offer to sell or a solicitation of an offer to buy any securities in Aston Bay Holdings Ltd. (the "Company"), and may not be relied upon in connection with the purchase or sale of any security.

Forward-Looking Statements and General Disclaimer:

This presentation is Copyright 2019 Aston Bay Holdings Ltd., which reserves all rights in and to this presentation.

Aston Bay Holdings Ltd. (the "Company") is a public company listed on the TSX Venture Exchange (TSX-V: BAY), with a principal office in Toronto, Ontario and a registered office in British Columbia, Canada.

The statements contained in this presentation which are historical in nature are accurate to the best of our knowledge. However, the Company makes no assurances and does not guarantee that the statements included herein are accurate.

Forward-Looking Statements (Safe Harbor Statement):

The information set forth in this website may contain "forward-looking statements" that are not historical fact and are subject to certain risks and uncertainties. Statements in this website which are not purely historical in nature, including statements regarding beliefs, plans, expectations or intentions regarding the future, are forward-looking. Statements that are not historical facts, including statements that are preceded by, followed by, or that include such words as "estimate," "anticipate," "believe," "plan", "intend", "expect", "may" or "should" or similar statements, are forward-looking statements. Forward-looking statements which may be contained within this website include, but are not limited to, statements regarding the economic prospects of the Company's projects, general economic conditions, the Company's future plans or future revenues, timing of development and potential expansion or improvements. Such forward-looking statements are subject to risks and uncertainties which could cause actual results to differ materially from estimated results. Such risks and uncertainties include, but are not limited to, the Company's ability to raise sufficient capital to fund development, changes in general economic conditions or financial markets, changes in prices for the Company's mineral products or increases in input costs, litigation, legislative, environmental and other judicial, regulatory, political and competitive developments in Canada and world-wide, technological and operational difficulties or inability to obtain permits encountered in connection with exploration and development activities, labor relations matters, and changing foreign exchange rates. There can be no assurance that the Company's efforts will succeed and ultimately achieve sustained commercial success. These forward-looking statements are made as of the date of this presentation. There can be no assurance that beliefs, plans, expectations or intentions of the Company will prove to be accurate. We seek safe harbour.

Cautionary Note to U.S. Investors:

The United States Securities and Exchange Commission (the "SEC") permits U.S. mining companies, in their filings with the SEC, to disclose only those mineral deposits that a company can economically and legally extract or produce. We may use certain terms on this presentation, such as "measured," "indicated," "inferred," and "resources," that the SEC guidelines strictly prohibit U.S. registered companies from including in their filings with the SEC. As of the date of this Presentation, the Company has made no filings with the SEC, and makes no representations that it has or will have a duty to make filings with the SEC.

Qualified Person:

The technical information contained within this presentation has been reviewed and approved by the Company's Consultant, Primary Geologist and Director, Michael Dufresne, M.Sc., P. Geo., a qualified person as defined by NI 43-101.

Aston Bay Property, Nunavut

❖ Sediment-hosted copper and zinc

- Potential for *large, high grade* deposits: “Congo-style” copper, Polaris-style zinc
- High grade copper and zinc at surface
- On tidewater

Blue Ridge Properties, Virginia

❖ Carolina Slate Belt gold

❖ SEDEX, VMS, sediment-hosted copper, zinc and cobalt

- High grade gold at surface
- Year-round exploration
- Drill-ready, drill quickly

TSX-V: BAY
OTCQB: ATBHF



Thomas Ullrich – Chief Executive Officer, Director

Mr. Ullrich has over 20 years of experience in mineral exploration and geoscience. Before joining Aston Bay in 2016, Mr. Ullrich was Chief Geologist North America for Antofagasta Minerals plc, investigating the region's copper potential through extensive property evaluations and management of drill programs in Alaska and Canada. Prior to Antofagasta, he was Senior Geologist for Almaden Minerals, where he managed the drill program for the team's discovery of the Ixtaca Ag-Au deposit in Mexico. Mr. Ullrich also established the Ar-Ar geochronology lab at the University of British Columbia and studied the Candelaria Cu-Au mine, Chile, while at Queen's University. Mr. Ullrich also serves on the Technical Advisory Board for CopperBank Resources.



David Broughton – Chief Geologist, Storm and Seal Projects

Dr. Broughton is an acknowledged expert in sediment-hosted copper deposits with over 30 years' experience in mineral exploration. He was Geology Manager for Cyprus Amax's Kansanshi pre-feasibility project, now Africa's largest copper mine. From 2008 to 2016 he was Executive Vice President Exploration for Ivanplats, now Ivanhoe Mines. During his tenure, the world-class Kamoa Cu (Central African Copperbelt) and Flatreef PGE-Ni-Cu-Au (Bushveld Complex) deposits were discovered. He was co-awarded PDAC's 2015 Thayer Lindsley Award for International Mineral Discovery (Kamoa), and AME BC's 2016 Colin Spence Award for Excellence in Global Mineral Exploration (Flatreef discovery). Dr. Broughton is currently a Senior Advisor for Ivanhoe Mines. He received a BSc. (Hons) and an MSc. in Earth Sciences from the University of Waterloo and a Ph.D. in Geology from the Colorado School of Mines.



Donald Taylor – Advisor, Blue Ridge Project

Donald Taylor is former Chief Operating Officer for Arizona Mining and the 2018 Thayer Lindsley Award winner for his discovery of the Taylor Pb-Zn-Ag Deposit in Arizona. Mr. Taylor has more than 25 years of mineral exploration experience with precious and base metals on five continents, taking projects from exploration to mine development. He has worked extensively for large and small cap companies, including BHP Minerals, Bear Creek Mining, American Copper and Nickel, Doe Run Resources, and Westmont Mining Company. He is a Licensed Professional Geologist in several eastern and western states and a qualified person as defined by National Instrument 43-101. Mr. Taylor has a Bachelor of Science degree in Geology from Southeast Missouri State University and a Master of Science degree from University of Missouri at Rolla.



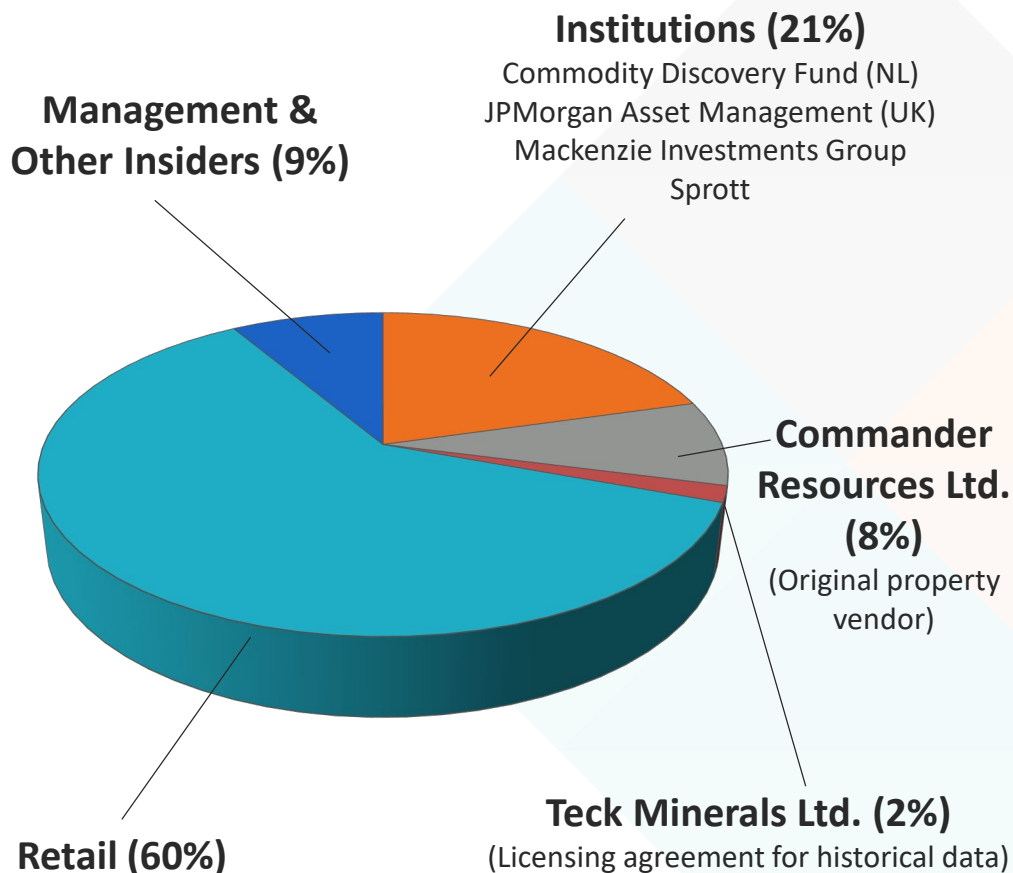
Elaine Ellingham – Advisor

Ms. Ellingham is a mining executive and geologist with over 30 years of experience in the mining industry. She is a consultant providing geological and corporate finance advisory services to international clients. Ms. Ellingham spent eight years with the Toronto Stock Exchange, from 1997 to 2005, in a number of capacities including National Leader of Mining. She has a range of experience in mineral exploration, corporate development and investor relations for mining companies including Aurania Resources Ltd., IAMGOLD Corporation, Campbell Resources Inc., Rio Algom Exploration Inc. and St Joe Canada Inc. Ms. Ellingham is a former Director of Richmond Mines Inc. (acquired by Alamos in 2017) and acted as Richmond's interim President and Chief Executive Officer from July to November 2014. Currently, Ms. Ellingham is a Director of Alamos Gold Inc., Almaden Minerals Ltd. and Aurania Resources Ltd.



Sofia Harquail – IR and Corporate Development

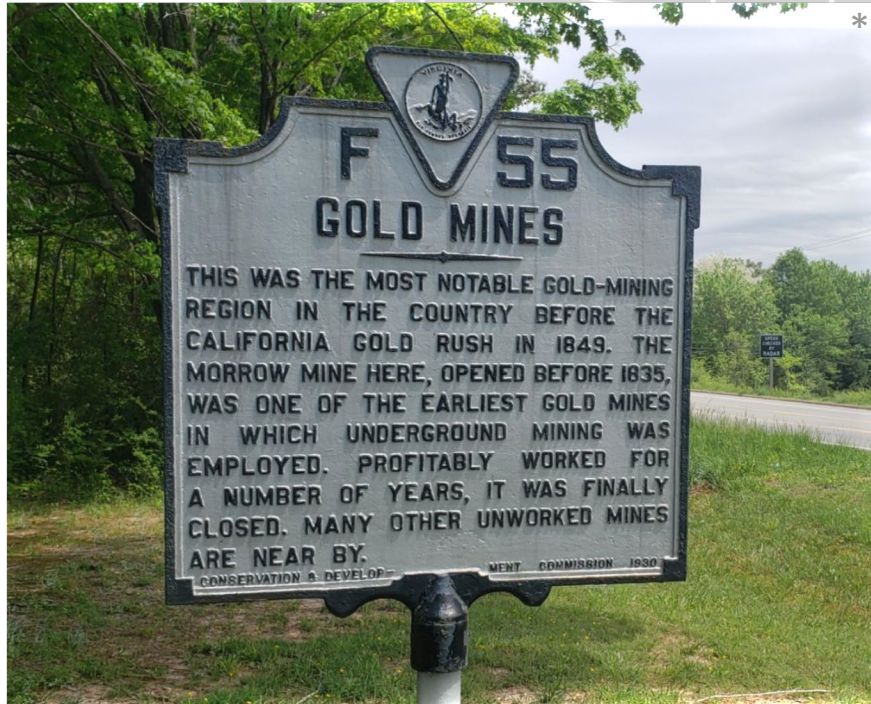
Ms. Harquail has experience in both the private and public sectors of the mining industry. Over the last five years, she has worked as a consultant for the Prospectors and Developers Association of Canada and for exempt market dealer Red Cloud Klondike Strike Inc. Ms. Harquail holds an M.A. from the University of Uppsala in Sweden and received her CPIR designation from the CIRI/Ivey Investor Relations Program. She also sits on the board of the Young Mining Professionals Toronto and is CSC Certified.



Shares Outstanding	129,570,854
❖ Warrants ¹	12,245,196
❖ Options ²	9,592,500
Share Price	\$0.065*
Market Cap	\$8.4M*
Cash	\$0.20M^
Debt	NIL
Insider Ownership	9%
Average Volume	800k shares/day ³

1. Warrant Details: Exercise price \$0.20 and expiring Q1/2 2020.
 2. Options Details: 5,567,500 Average exercise price \$0.23 and expiring 2020-2024. 4,025,000 exercise price \$0.10 and expiring 2026.
 3. 2019 average daily volume to July 8, TSX-V + ATS trades
- * All prices CAD, dated July 8, 2019.
- ^ Cash in CAD, dated June 2019.

Yes, Virginia...



...there is a mining region here.

Blue Ridge Properties

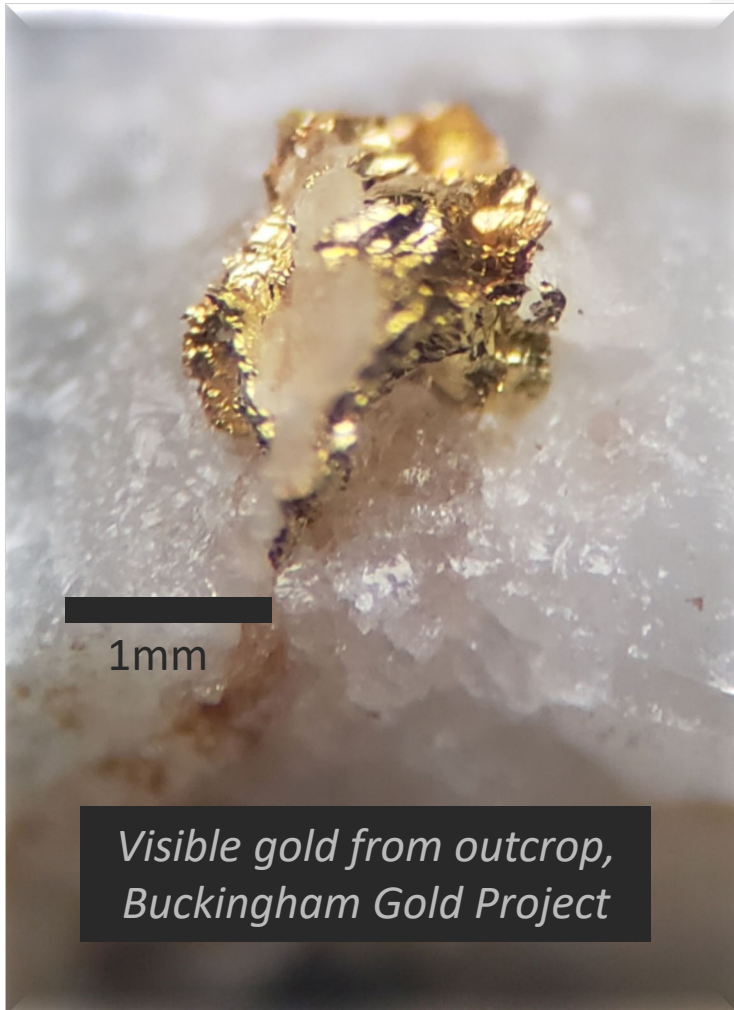
- **High grade gold veins at surface and concealed under cover**
 - 35.61 g/t Au over 2.03m
 - 24.73 g/t over 3.57m incl. 62.51 g/t over 1.39m
- **“Haile-style” disseminated gold**
 - 2.16 g/t over 18.07m and 1.9 g/t over 22.22m
- **Cu-Pb-Zn-Au-Ag-Co mineralized belt prospective for VMS, SEDEX or Broken Hill (BHT) type deposits**
 - 2.77% Cu, 0.94% Zn over 5m and 1.17% Cu, 5.23% Zn over 2.25m

Jurisdiction and exploration advantage



- ❖ Private land: timber farms, resource-friendly
- ❖ Fee simple jurisdiction – **no drill permitting required**
- ❖ Database to see through soil cover
 - 1.2 million acre airborne EM/Mag
 - Regional geochemistry
- ❖ Expertise, experience and relationships
 - **Copper, zinc and gold targets**
 - **Don Taylor directing exploration**
- ❖ Geographic diversification and seasonality reduction
- ❖ Commodity diversification: gold

Buckingham Gold Project



- ❖ Geologic extension of the Carolina and Avalon Slate Belts – **significant gold potential**
- ❖ *Gold-bearing quartz veining historic results*
 - ❖ surface strike length of over 150 m within larger gold-in-soil anomaly of up to 0.4 g/t Au in soil that **extends for 5 km (3 miles)**
 - ❖ up to **701 g/t (g/t) Au (20.4 ounces per short ton)** in surface grab samples
 - ❖ quartz vein intercepts of **15.57 g/t Au over 4.1m** and **11.69 g/t Au over 3.1m** in sparse historical drilling
- ❖ *Disseminated gold historic results*
 - ❖ **24.43m of 0.4 g/t Au** in altered volcanic rocks
- ❖ Initial 2019 six hole, 878m drill program complete:
 - ❖ **35.61 g/t Au over 2.03m**
 - ❖ **20.44 g/t over 3.30m and 34.25g/t over 0.5m**
 - ❖ **24.73 g/t over 3.57m incl. 62.51 g/t over 1.39m**
 - ❖ **2.16 g/t over 18.07m and 1.9 g/t over 22.22m**

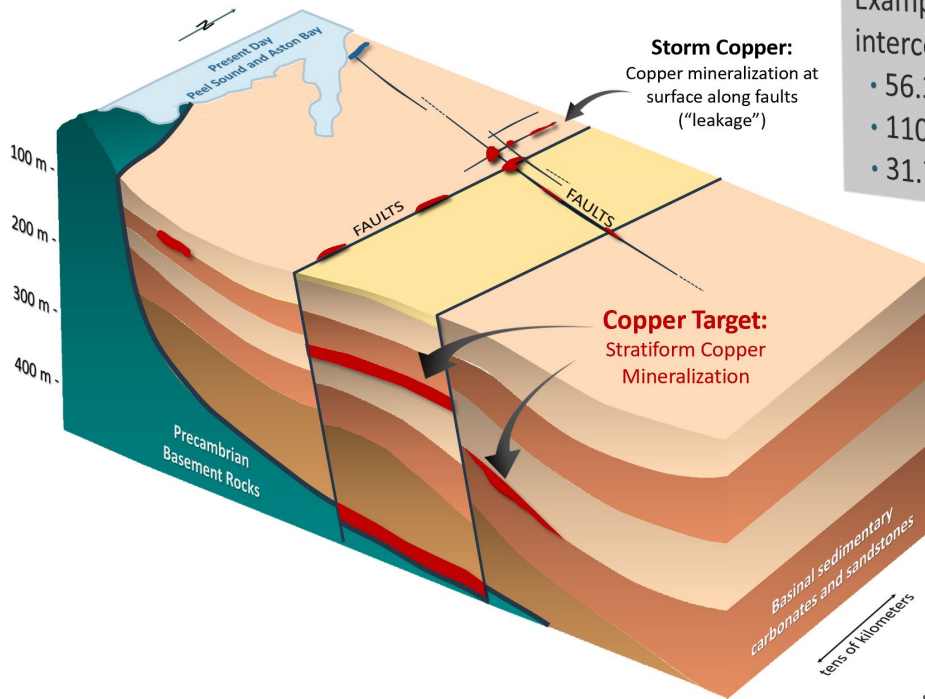
Storm Copper

- *High grade, near-surface copper mineralization*
- *Over 16,000 metres of recent and historic shallow drilling*
- *Historic highlights include:*
 - *56.3m @ 3.07% Cu*
 - *110.0m @ 2.45% Cu*
 - *31.7m @ 2.08% Cu*

Seal Zinc

- *High grade zinc and silver at surface, on tidewater*
- *200 km south of Polaris, along same mineralized structure*
- *Same age as Polaris mineralization*
- *Initial resource 1Mt @ 10.24% Zn and 45.6 g/t Ag*

Strong indications of robust copper and zinc mineralizing systems
– but where can we find more?

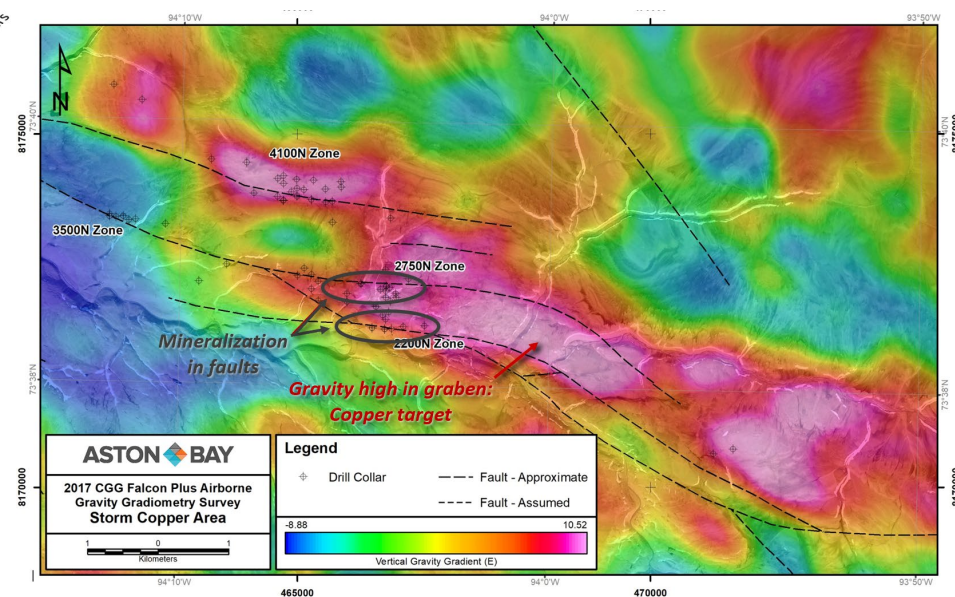


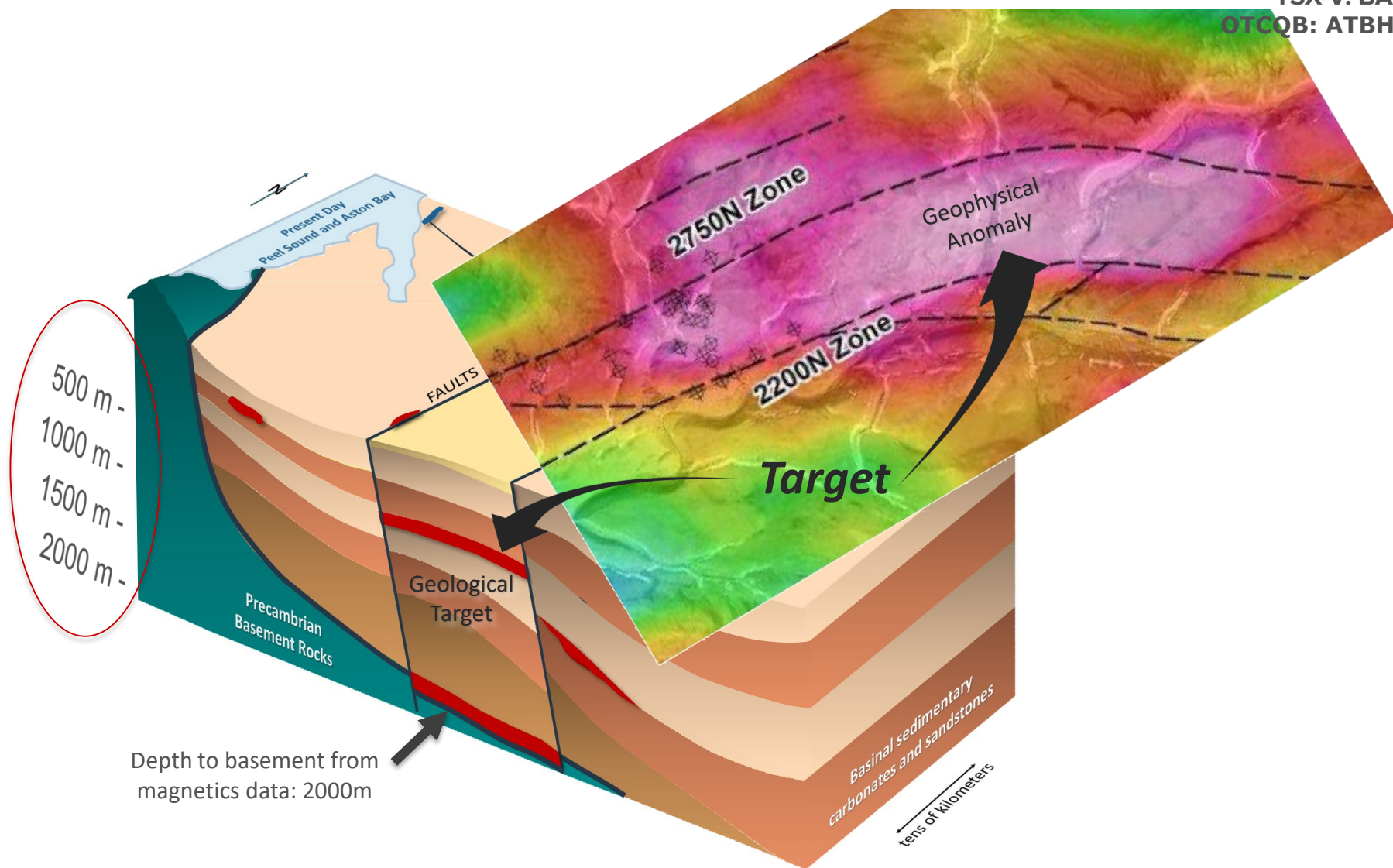
Example near-surface intercepts:

- 56.3m @ 3.07% Cu
- 110.0m @ 2.45% Cu
- 31.7m @ 2.08% Cu

**Hidden targets:
backed by geophysics**

**Robust mineralizing system
+ compelling model:
hidden targets**





The challenge: deep sedimentary basin + poor depth control with gravity. Additional ground geophysics is planned to identify prospective targets at reasonable depths

Q2 2019

- ❖ Blue Ridge Properties
 - **Buckingham Gold Project**
 - **agreement signed**
 - **initial drill program completed**
 - Additional agreements near completion: major timber company, other landowners
 - Base metals targeting
- ❖ Aston Bay Property
 - Geological and geophysical interpretation

Q3/Q4 2019

- ❖ Blue Ridge Properties
 - Proposed drilling, geochemical and geophysical surveys at Buckingham Gold Project in August/September
 - **explore 5km strike length**
 - **follow-up drilling**
 - Proposed drilling on **new base metals (CuZnPbCo±Au) targets**
- ❖ Aston Bay Property
 - Ground geophysics to improve targeting
 - Preparation for 2020 drill program

For More Information

Thomas Ullrich, CEO, Director
thomas.ullrich@astonbayholdings.com

Sofia Harquail, IR and Corporate Development
sofia.harquail@astonbayholdings.com

80 Richmond St. W, Suite 303, Toronto, ON M5H 2A4 Canada
www.astonbayholdings.com